

# Longitudinal Immigration Survey: New Zealand (LisNZ)

*Te Ara O Nga Manene*  
(*The Pathway of the Migrants*)

A Partnership between  
**Statistics New Zealand**  
and  
**Department of Labour**

## This presentation will cover

- LisNZ context
- Objectives and Information Needs
- Survey sample
- Why a longitudinal survey?
- Survey timeline
- Where LisNZ is currently at?
- LisNZ challenges
- On the horizon

## LisNZ context

- Immigration research programme
- Policy direction
- International examples of longitudinal immigration surveys
  - \* Australia
  - \* Canada
- Migrant Levy

## Objectives and Information Needs

- Profile of migrants with successful settlement
- What helps migrants settle?
- What are stumbling blocks to settlement?
- What are the outcomes for migrants to NZ?
- How effective is immigration policy?

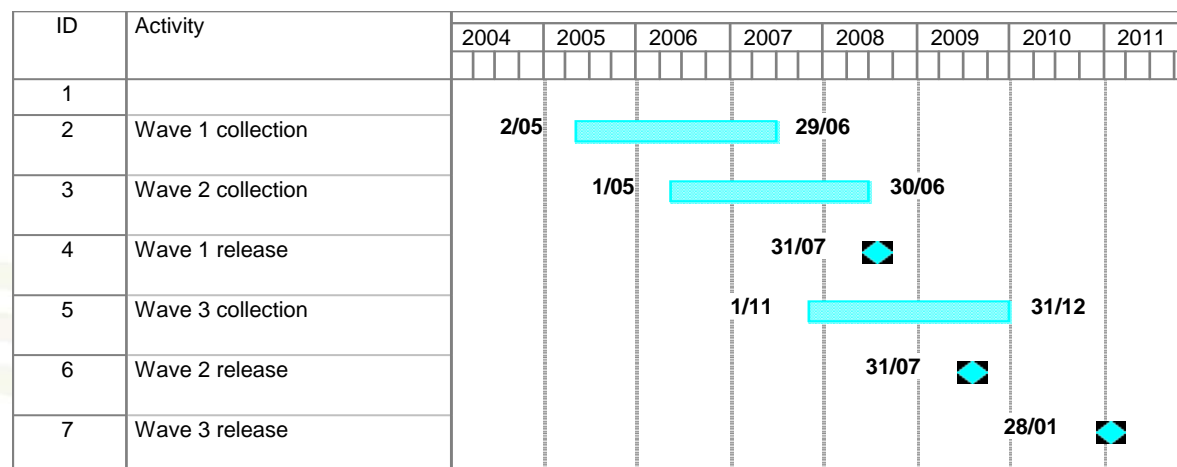
## Survey sample

- Permanent Residence approvals Nov 2004 – Oct 2005
- No refugees
- Older than 15
- Stratified sample
  - \* Application category
  - \* Sub population
  - \* Visa or permit

## Why a longitudinal survey?

- Settlement is a process
- Compare changing situation
- International evidence of best results

# Survey timeline



# Where is LisNZ currently at?

## Wave 1

- Collection finished
- Data processing
- Client dataset

# Where is LisNZ currently at?

## Wave 2

- Collection at advanced stage
- Some system changes
- Longitudinal development

# Where is LisNZ currently at?

## Wave 3

- Questionnaire developed
- Collection starts 1 November 07

## LisNZ Challenges

- Finding the sample
- Mobility
- Diversity
- Language barriers
- 6 Questionnaires

## On the horizon

- First release (HOTP)
- Data publicly available
- Department of Labour summary report
- Department of Labour special research topic reports

