

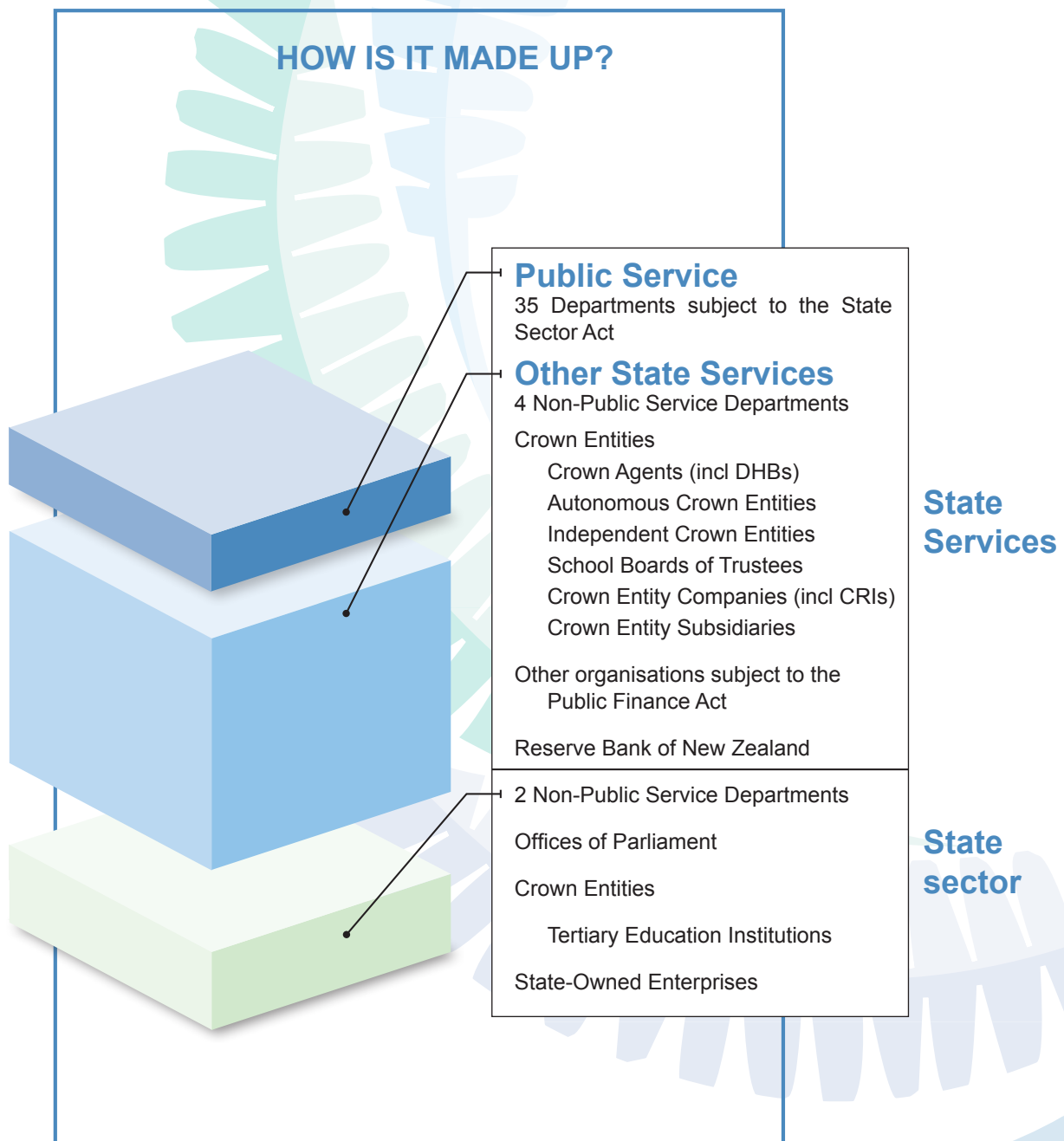
A guide to New Zealand's

State Services

The term 'State Services' is defined in the State Sector Act as including 'All instruments of the Crown in respect of the Government of New Zealand'.

This includes Public Service departments, non Public Service departments, Crown entities, the Reserve Bank and entities on the new Public Finance Act Fourth Schedule (such as Fish and Game Councils). It excludes Tertiary Education Institutions and State-owned enterprises.

The agencies in the State Services, plus a range of other organisations included in the annual financial statements of the Government, collectively make up New Zealand's wider State sector.



State sector agencies, as at 31 July 2009

(Listed by legal title)

PUBLIC SERVICE DEPARTMENTS (35)

- Ministry of Agriculture and Forestry
- Archives New Zealand (Te Rua Mahara o te Kāwanatanga)
- Department of Building and Housing
- Department of Conservation
- Department of Corrections
- Crown Law Office
- Ministry for Culture and Heritage
- Ministry of Defence
- Ministry of Economic Development
- Ministry of Education
- Education Review Office
- Ministry for the Environment
- Ministry of Fisheries
- Ministry of Foreign Affairs and Trade
- Government Communications Security Bureau
- Ministry of Health
- Inland Revenue Department
- Department of Internal Affairs
- Ministry of Justice
- Department of Labour
- Land Information New Zealand
- Ministry of Māori Development
- National Library of New Zealand Te Puna Mātauranga o Aotearoa
- New Zealand Customs Service
- New Zealand Food Safety Authority
- Ministry of Pacific Island Affairs
- Department of the Prime Minister and Cabinet
- Ministry of Research, Science, and Technology
- Serious Fraud Office
- Ministry of Social Development
- State Services Commission
- Statistics New Zealand
- Ministry of Transport
- The Treasury
- Ministry of Women's Affairs

NON-PUBLIC SERVICE DEPARTMENTS (6)

- Office of the Clerk of the House of Representatives
- New Zealand Defence Force
- New Zealand Police
- New Zealand Security Intelligence Service
- Parliamentary Counsel Office
- Parliamentary Service

CROWN ENTITIES

Statutory Entities

Crown Agents (27)

- Accident Compensation Corporation
- Career Services
- Civil Aviation Authority of New Zealand
- Crown Health Financing Agency
- District Health Boards (21)
- Earthquake Commission
- Electricity Commission
- Energy Efficiency and Conservation Authority
- Foundation for Research, Science, and Technology
- Health Research Council of New Zealand
- Health Sponsorship Council
- Housing New Zealand Corporation
- Legal Services Agency
- Maritime New Zealand
- New Zealand Antarctic Institute
- New Zealand Blood Service
- New Zealand Fire Service Commission
- New Zealand Qualifications Authority
- New Zealand Tourism Board
- New Zealand Trade and Enterprise
- New Zealand Transport Agency
- New Zealand Walking Access Commission
- Pharmaceutical Management Agency
- Real Estate Agents Authority
- Social Workers Registration Board
- Sport and Recreation New Zealand
- Tertiary Education Commission

Autonomous Crown Entities (ACEs) (22)

- Alcohol Advisory Council of New Zealand
- Arts Council of New Zealand Toi Aotearoa
- Broadcasting Commission
- Charities Commission
- Environmental Risk Management Authority
- Families Commission
- Government Superannuation Fund Authority
- Guardians of New Zealand Superannuation
- Mental Health Commission
- Museum of New Zealand Te Papa Tongarewa Board
- New Zealand Artificial Limb Board
- New Zealand Film Commission
- New Zealand Historic Places Trust (Pouhere Taonga)
- New Zealand Lotteries Commission
- New Zealand Symphony Orchestra
- New Zealand Teachers Council

- Public Trust
- Retirement Commissioner
- Standards Council
- Te Reo Whakapuaki Iirangi (Māori Broadcasting Funding Agency)
- Te Taura Whiri i Te Reo Māori (Māori Language Commission)
- Testing Laboratory Registration Council

Independent Crown Entities (ICEs) (15)

- Accounting Standards Review Board
- Broadcasting Standards Authority
- Children's Commissioner
- Commerce Commission
- Drug Free Sport New Zealand
- Electoral Commission
- Health and Disability Commissioner
- Human Rights Commission
- Independent Police Conduct Authority
- Law Commission
- Office of Film and Literature Classification
- Privacy Commissioner
- Securities Commission
- Takeovers Panel
- Transport Accident Investigation Commission

Crown entity companies (12)

Crown Research Institutes (CRIs)

- AgResearch Limited
- Industrial Research Limited
- Institute of Environmental Science and Research Limited
- Institute of Geological and Nuclear Sciences Limited
- Landcare Research New Zealand Limited
- National Institute of Water and Atmospheric Research Limited
- New Zealand Forest Research Institute Limited
- New Zealand Institute for Plant and Food Research Limited, The

Other companies

- New Zealand Fast Forward Fund Limited
- New Zealand Venture Investment Fund Limited
- Radio New Zealand Limited
- Television New Zealand Limited

Crown entity subsidiaries

School Boards of Trustees

Tertiary Education Institutions

- Polytechnics/Institutes of Technology
- Universities
- Wananga

PUBLIC FINANCE ACT SCHEDULE 4 ORGANISATIONS

- Agricultural and Marketing Research and Development Trust
- Asia New Zealand Foundation
- Auckland Transition Agency
- Fish and Game Councils (12)
- Leadership Development Centre Trust
- Maori Trustee, The
- National Pacific Radio Trust
- New Zealand Fast Forward Limited
- New Zealand Fish and Game Council
- New Zealand Game Bird Habitat Trust Board
- New Zealand Government Property Corporation
- New Zealand Lottery Grants Board
- Ngai Tahu Ancillary Claims Trust
- Pacific Co-operation Foundation
- Pacific Island Business Development Trust
- Research and Education Advanced Network New Zealand Limited
- Reserve Boards (24)
- Road Safety Trust
- Sentencing Council

RESERVE BANK OF NEW ZEALAND

OFFICES OF PARLIAMENT

- Office of the Controller and Auditor-General
- Office of the Ombudsmen
- Office of the Parliamentary Commissioner for the Environment

STATE-OWNED ENTERPRISES (17)

- Airways Corporation of New Zealand Limited
- Animal Control Products Limited
- AsureQuality Limited
- Electricity Corporation of New Zealand Limited
- Genesis Power Limited
- Kordia Group Limited
- Landcorp Farming Limited
- Learning Media Limited
- Meridian Energy Limited
- Meteorological Service of New Zealand Limited
- Mighty River Power Limited
- New Zealand Post Limited
- New Zealand Railways Corporation
- Quotable Value Limited
- Solid Energy New Zealand Limited
- Timberlands West Coast Limited
- Transpower New Zealand Limited